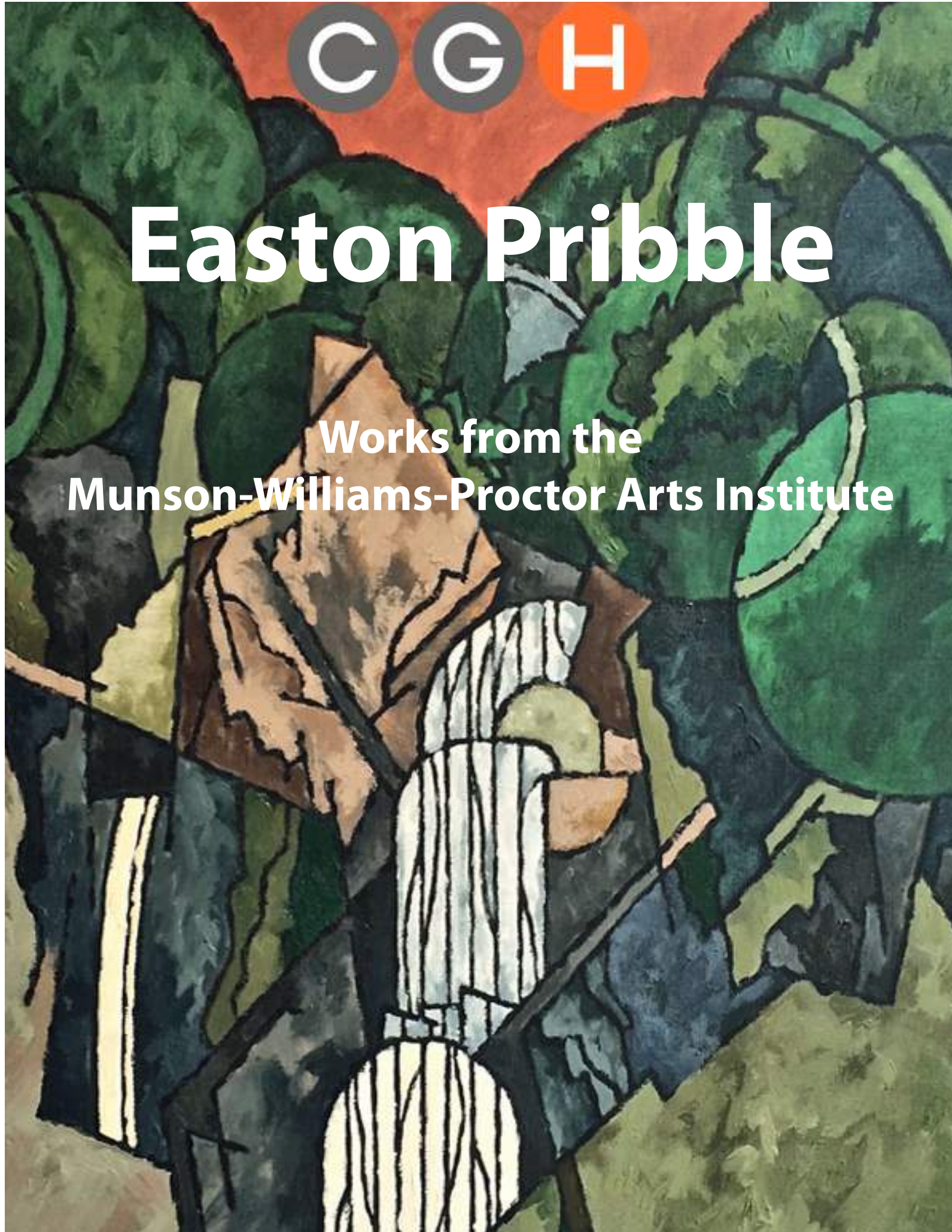




Easton Pribble

Works from the
Munson-Williams-Proctor Arts Institute





“My work has been eclectic because I love the contradictions in the world around me, and the richness of those experiences.”

– Easton Pribble

Wilfred Easton Pribble used architectural lines and bright colors to create precisionist-inspired American landscapes, both rural and urban. A successful painter, with a long teaching career, his work was influenced by European modernists like Paul Cézanne and Henri Matisse.

Pribble was born in Falmouth, Kentucky on July 31, 1917 to parents Louise Parker and Thaddeus S. Pribble, and spent most of his childhood in southern Indiana. He studied art at the University of Cincinnati, School of Applied Arts, and after finishing his studies served in the US Army during World War II. After the war Pribble moved to New York City where he began exhibiting works at the Pinacotheca Gallery and the Alan Gallery. He also worked for Henry Heydrenryk, one of the world's oldest and most prestigious framing companies, founded in 1845 in Amsterdam. Pribble was a consultant and designer of hand-made frames at Heydrenryk for eight years.

A trip to Italy in the early 1950s greatly influenced Pribble's artistic style and caused him to briefly abandon representational work in favor of the abstract. This was short-lived, however after his return to the Midwest landscapes that stirred him in his youth, he resumed his figural style of painting.

In 1954 Pribble received a working fellowship at the Saratoga Springs artist's community, Yaddo. In his time there he further explored landscapes, which would remain a favorite theme for the rest of his life. His work from this period was strongly influenced by an appreciation of Cézanne's landscapes. This style may be seen both in his painting *Pine Woods*, which is part of the Whitney Museum of American Art collection, as well as *May, Ripley County, Indiana* that hangs at the Hirshhorn Museum and Sculpture Garden. The various landscapes of the places Pribble called home and traveled to were frequently the subjects of his canvases – from Southern Indiana to upstate New York to Maine.

Pribble's long and successful teaching career began in 1954. He was an Instructor in painting, drawing, and art history at Munson-Williams-Proctor Arts Institute for forty-five years. He was also dedicated to peace activism and social justice.

Pulling from European modernists and Post-Impressionists in his work, Pribble at first creatively struggled with what he was taking from other artists and what was his own. He came to terms with his own style later in life, "I know there are dozens of influences in my present work, but I honestly feel that I finally digested them. I don't worry about influences any more. Whatever the influences were they have now become so thoroughly a part of me and my lifetime that I can work unselfconsciously." [1]

As many artists before and since have done Pribble sought to convey on canvas his interpretation of the American landscape. Using a "strong structural armature to organize his paintings" [2] in combination with decades of repeated visits to the same sites he was able to bring to us his particular view of America.

Chronology

1917 Born in Falmouth, Kentucky July 31

1937-41 Studied art at University of Cincinnati, School of Applied Arts

1942-45 Fought in World War II

1946 Moved to New York City

1946-1955 Worked for Henry Heydrenryk, NY

1950-51 Traveled in Italy, France, and Belgium

1954-55 & 1968 Working fellowship at Yaddo, in Saratoga Springs

1954-57 Taught private art classes in New York

1957-2002 Instructor in painting, drawing, and art history at Munson-Williams-Proctor Art Institute School of Art

1961 & 1971 Returned to Europe

2003 Died January 24

Collections (Selected)

Whitney Museum of American Art, New York, NY

Parrish Art Museum, Southampton, NY

Hirshhorn Museum and Sculpture Garden, Washington, DC

Fallingwater, Mill Run, PA

Monhegan Museum of Art, Monhegan, ME

Munson-Williams-Proctor Institute Museum of Art, Utica, NY

Solo Exhibitions (Selected)

The Pinacotheca Gallery, New York, NY

The Charles Alan Gallery, New York, NY

Munson-Williams-Proctor Institute Museum of Art, Utica, NY

The Edward W. Root Art Center, Hamilton College, Clinton, NY

Utica College of Syracuse University, Utica, NY

Group Exhibitions (Selected)

Whitney Museum of American Art, New York, NY

The Museum of Modern Art, New York, NY

The Baltimore Museum of Art, Baltimore, MD

Art Institute of Chicago, Chicago, IL

Cincinnati Art Museum, Cincinnati, OH

Walker Art Center, Minneapolis, MN

The Museum of Fine Arts, Houston, TX

Los Angeles County Museum of Art, Los Angeles, CA

Everson Museum of Art, Syracuse, NY

Honolulu Academy of Arts, Honolulu, HI

The National Museum of Modern Art, Tokyo, Japan

Munson-Williams-Proctor Institute Museum of Art, Utica, NY



Easton Pribble
Cove Near Stonington, Maine, 1982
 Oil on canvas
 24h x 30w in
 PRB.038
 \$ 3,850.00



Easton Pribble
Preble Cove, Cranberry Island, 1983
 Oil on canvas
 24h x 32w in
 PRB.039
 \$ 4,000.00



Easton Pribble

Moose River Below Lyonsdale, 1982

Oil on canvas

22h x 32w in

PRB.040

\$ 3,800.00



Easton Pribble

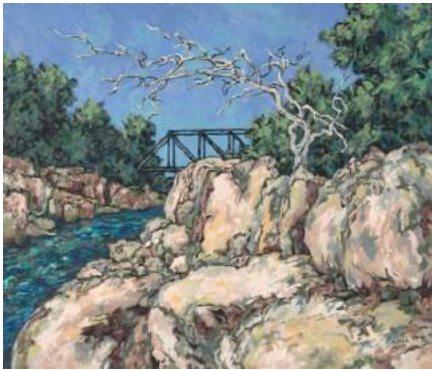
Bunker Head, Cranberry Island, Maine, 1974

Oil on canvas

19 1/4h x 27w in

PRB.042

\$ 3,250.00



Easton Pribble

Ohio Gorge, Herkimer County, 1983

Oil on canvas

26 1/8h x 30 3/16w in

PRB.043

\$ 3,500.00



Easton Pribble

Spruce Trees on Cranberry Island, Maine, 1974

Oil on canvas

30 7/16h x 36 1/8w in

PRB.044

\$ 4,200.00



Easton Pribble
Blue Dusk, 1962
 Oil on canvas
 30h x 35 1/2w in
 PRB.045
 \$ 3,850.00



Easton Pribble
Barge Canal at Little Falls, No. 2, 1963
 Oil on canvas
 29 7/16h x 35 5/16w in
 PRB.046
 \$ 6,800.00



Easton Pribble
Mount Desert From Cranberry Island, 1971
 Oil on canvas
 20h x 24w in
 PRB.054
 \$ 2,850.00



Easton Pribble

Mount Pleasant Ridge, 1958

Oil on canvas

29 7/16h x 35 1/2w in

PRB.059

\$ 4,500.00



Easton Pribble

Moose River Pool at Lyonsdale, 1972

Oil on canvas

18 1/2h x 22 3/4w in

PRB.060

\$ 3,000.00



Easton Pribble

Waterfall #2, 1971

Oil on chipboard

18 3/4h x 22 1/2w in

PRB.063

\$ 3,000.00



Easton Pribble

North Hogan Valley, Aurora, Indiana, 1983

Oil on canvas

23 3/4h x 28 1/8w in

PRB.065

\$ 4,200.00



Easton Pribble
Landscape Near Blue Hill, Maine, 1978
 Oil on canvas
 30h x 36w in
 PRB.068
 \$ 4,000.00



Easton Pribble
The First Suburban View, 1984
 Oil on canvas
 30 1/16h x 36w in
 PRB.075
 \$ 6,500.00



Easton Pribble
Green Maple, 1966
 Oil on linen
 30h x 40w in
 PRB.080
 \$ 4,500.00



Easton Pribble
Granite Ledges and Spruce Relics, 1990
 Oil on linen
 28h x 28w in
 PRB.090
 \$ 3,500.00



Easton Pribble

Mohawk Wooded Slopes, 1986

Oil on linen

36h x 50w in

PRB.104

\$ 6,500.00



Easton Pribble

Cinema City, 1994

Oil on canvas

35 7/8h x 31 7/8w in

PRB.109

\$ 5,500.00



Easton Pribble

American House and Garden, 1977

Oil on canvas

30h x 36w in

PRB.120

\$ 6,000.00



Easton Pribble

High Granite Banks, Moose River, 1987

Oil on canvas

30h x 36w in

PRB.121

\$ 4,250.00



Easton Pribble

Still Life No. 1, 1989

Oil on particle board

22 9/16h x 18 11/16w in

PRB.122

\$ 2,200.00



Easton Pribble

Still Life No. 3, 1989

Oil on particle board

22 11/16h x 18 11/16w in

PRB.123

\$ 1,850.00



Easton Pribble

Maples and Oaks, 1991

Oil on canvas

30 3/16h x 26 1/8w in

PRB.124

\$ 4,250.00



Easton Pribble

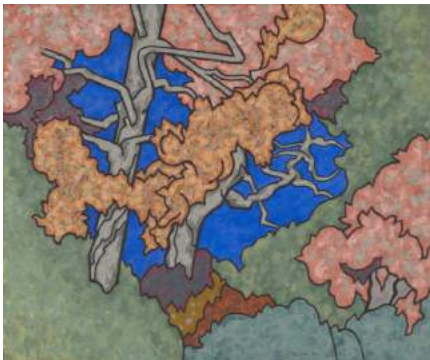
Granite Ledges, Isle au Haut, 1992

Oil on canvas

30h x 24 1/16w in

PRB.128

\$ 3,800.00



Easton Pribble

Maple Grove, 1992

Oil on linen

23 5/8h x 28 1/8w in

PRB.129

\$ 3,200.00



Easton Pribble

Ravine with Trees and Stump, 1995

Oil on canvas

32h x 24w in

PRB.131

\$ 3,500.00



Easton Pribble
Still Life No. 6, 1995
 Oil on canvas
 15h x 18w in
 PRB.133
 \$ 2,200.00



Easton Pribble
Green Tree, Yellow Tree, 1995
 Oil on canvas
 20 1/16h x 24w in
 PRB.134
 \$ 3,200.00



Easton Pribble
Blue Tree, Green Tree, 1996
 Oil on linen
 23 15/16h x 19 15/16w in
 PRB.136
 \$ 2,500.00



Easton Pribble
Manufactory #2, 1988
 Oil on linen
 30h x 36w in
 PRB.142
 \$ 5,000.00



Easton Pribble

Granite and Spruce, Schoodic Point, 1996

Oil on linen

22h x 30w in

PRB.143

\$ 3,600.00



Easton Pribble

Urban Construction #5, 1995

Oil on canvas

33 5/8h x 37 11/16w in

PRB.146

\$ 5,500.00



Easton Pribble

Late Sun on Oak Tree, 1984

Oil on canvas

29 1/4h x 29 1/2w in

PRB.147

\$ 3,500.00



Easton Pribble

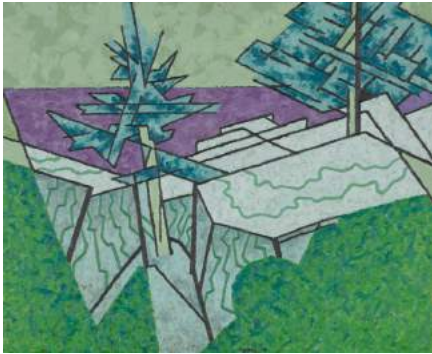
Woodland Barn, 1986

Oil on canvas

19 1/2h x 31 1/2w in

PRB.149

\$ 3,600.00



Easton Pribble

Bunkerhead, Cranberry Island, 1984

Oil on canvas

20 1/2h x 24 1/2w in

PRB.150

\$ 3,000.00



Easton Pribble

Still Life, 1999

Oil on canvas

15 3/4h x 19 3/4w in

PRB.151

\$ 2,200.00



Easton Pribble

Trees in a Park, 1988

Oil on canvas

15 3/4h x 19 3/4w in

PRB.153

\$ 3,500.00



Easton Pribble

April Landscape, 1986

Oil on canvas

19h x 18w in

PRB.154

\$ 3,000.00



Easton Pribble

Untitled

Oil on canvas

20h x 24w in

PRB.155

\$ 3,000.00



Easton Pribble

Jones Street, NYC, 1958

Oil on canvas

19 1/2h x 23 1/2w in

PRB.156

\$ 4,800.00



Easton Pribble

Stonington Spruce and Granite, 1999

Oil on canvas

34h x 34w in

PRB.160

\$ 4,250.00



Easton Pribble

High Granite Bank of the Moose River, 1972

Oil on canvas

30 1/4h x 36w in

PRB.161

\$ 4,750.00



Easton Pribble
Trenton Gorge, West Canada Creek
 Oil on canvas
 34h x 42w in
 PRB.163
 \$ 5,000.00



Easton Pribble
Manufactory I, 1987
 Oil on canvas
 21 1/4h x 27 3/8w in
 PRB.165
 \$ 3,500.00



Easton Pribble
Harts Neck, Tenants Harbor, Maine (2nd version), 1974
 Oil on canvas
 31 3/4h x 25 1/2w in
 PRB.166
 \$ 3,750.00



Easton Pribble
Urban Construction I, 1987
 Oil on canvas
 29 1/8h x 29 1/2w in
 PRB.168
 \$ 3,750.00



Easton Pribble

Old Industry #2, 1991

Oil on canvas

29 1/2h x 29 1/8w in

PRB.169

\$ 4,500.00



Easton Pribble

Landscape at Norway, NY, 1969

Oil on canvas

28 1/4h x 30w in

PRB.171

\$ 4,000.00



Easton Pribble

Tanner Hill, Newport, NY, 1977-83

Oil on canvas

20h x 36w in

PRB.174

\$ 4,200.00



Easton Pribble

Ohio River Power Plant, 1957

Oil on canvas

30h x 36w in

PRB.178

\$ 5,000.00



Easton Pribble
Power Line Crossing, 1956
 Oil on canvas
 24h x 36w in
 PRB.180
 \$ 4,500.00



Easton Pribble
Bash Bish Falls, 1998
 Oil on canvas
 31" Tondo
 PRB.181
 \$ 3,800.00



Easton Pribble
Clouded Sun, 1988
 Watercolor on paper
 23 3/4h x 29 3/4w in
 PRB.189
 \$ 900.00



Easton Pribble
Two Sycamores, 1965
 Oil on canvas
 32h x 24w in
 PRB.191
 \$ 3,800.00



Easton Pribble
Tondo Landscape, 1967
 Oil on canvas
 23 3/4" Tondo
 PRB.194
 \$ 3,000.00



Easton Pribble
Spruce Roots, Stonington, ME, 1977
 Oil on canvas
 20h x 24w in
 PRB.208
 \$ 2,850.00



Easton Pribble

The Fourth Suburban View, 1988

Oil on canvas

16h x 30w in

PRB.209

\$ 3,000.00



Easton Pribble

Maple Energy, 1989

Oil on board

22 3/4h x 18 3/4w in

PRB.210

\$ 3,000.00



Easton Pribble

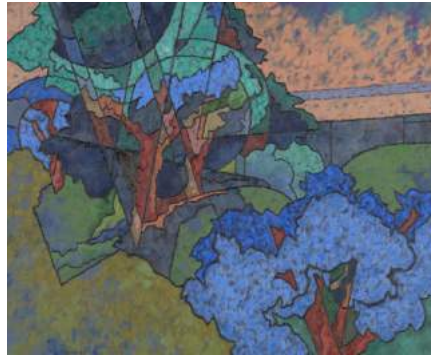
Isle au Haut, 1996-98

Oil on canvas

24h x 32w in

PRB.213

\$ 3,750.00



Easton Pribble

Late Afternoon, 1985

Oil on canvas

30h x 36w in

PRB.214

\$ 4,200.00



Easton Pribble

Glacial Boulders and Maple Relics, 1998

Oil on canvas

26h x 30 1/8w in

PRB.215

\$ 3,000.00



Easton Pribble

Moss Island, Little Falls, NY, 1987

Oil on canvas

34h x 24w in

PRB.216

\$ 3,800.00



Easton Pribble

Meadow Flowers, 1996

Oil on canvas

28h x 24w in

PRB.217

\$ 3,500.00



Easton Pribble

Urban Construction No. 8, 1992

Oil on canvas

32h x 36w in

PRB.219

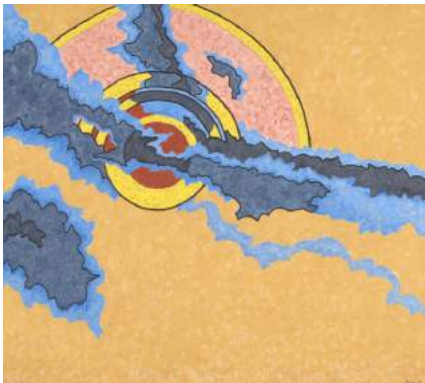
\$ 5,800.00



Easton Pribble
Color Study I, 1953
 Watercolor on paper
 19h x 25w in
 PRB.243
 \$ 2,200.00



Easton Pribble
Sunset, 1951
 Oil on canvas
 21 3/4h x 15 3/4w in
 PRB.247
 \$ 8,500.00



Easton Pribble
Sun and Clouds #2, 2000
 Oil on canvas
 34h x 37 3/4w in
 PRB.327
 \$ 4,000.00



Easton Pribble
Tango, 2000
 Oil on canvas
 16h x 22w in
 PRB.329
 \$ 4,500.00



Easton Pribble

Homage to the Hudson River School, 2001

Oil on canvas

47h x 29w in

PRB.330

\$ 5,800.00



Easton Pribble

Urban Construction #7, 1996

Oil on canvas

24 1/4h x 28w in

PRB.332

\$ 4,200.00



Easton Pribble

Suburban View # 8, 2001

Oil on canvas

31 1/2h x 25 3/4w in

PRB.333

\$ 5,200.00



Easton Pribble

Stonington Granite and Spruce, 2001

Oil on canvas

20 1/4h x 24 1/4w in

PRB.335

\$ 2,750.00



Easton Pribble

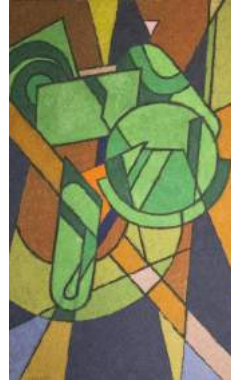
Spruce Relic and Ledge - Hart's Neck, Tenants Harbor, Maine, 1996-2001

Oil on canvas

34 1/4h x 21 1/4w in

PRB.338

\$ 3,200.00



Easton Pribble

Still Life #6, 1995

Oil on canvas

34h x 22w in

PRB.339

\$ 2,500.00



Easton Pribble

Porch Column #2, 1960

Oil on canvas

39 1/4h x 21 1/4w in

PRB.342

\$ 6,500.00



Easton Pribble

I-471, 2000

Oil on canvas

34 1/2h x 38 1/2w in

PRB.348

\$ 4,500.00



Easton Pribble
Spruce and Granite, Stonington Maine
 Oil on canvas
 23 1/2h x 27 1/2w in
 PRB.349
 \$ 3,000.00



Easton Pribble
Moose River Rocks, Lyonsdale, NY, 1972
 Oil on canvas
 25 1/2h x 33 3/4w in
 PRB.352
 \$ 4,200.00



Easton Pribble
Suburban View #9, 2002
 Oil on canvas
 39 3/4h x 39 3/4w in
 PRB.358
 \$ 5,500.00



Easton Pribble
Abstraction Landscape, 1967-68
 Oil on canvas
 24h x 24w in
 PRB.361
 \$ 1,500.00



Easton Pribble
Untitled, 1953
 Watercolor on paper
 19h x 25w in
 PRB.394
 \$ 2,800.00



Easton Pribble
Untitled, c.1953
 Oil on board
 22 3/4h x 25 3/4w in
 PRB.548
 \$ 10,000.00