

An abstract painting with a textured, layered appearance. On the left, a figure in a blue, translucent garment stands behind a large, dark, textured shape with orange and black horizontal stripes. To the right, a large, bright orange circle, resembling a sun or moon, is set against a pale, hazy background. Below the circle, dark, angular shapes and swirling white lines are visible on a brownish-yellow ground.

CGH

Summertime



Jay Caldwell, Principal

Joe Caldwell, Principal

Marcy Caldwell, Principal

Cynthia Caldwell Allen, Online Marketing

Heather Caldwell, Special Projects

355 Warren Street Hudson New York 12534

800-331-1278



Byron Browne 1907-1961
On the Beach (1959)
 Oil on canvas, 20" x 26"



John Grillo b.1917
Untitled (1953)
 Oil on canvas, 10" x 15"

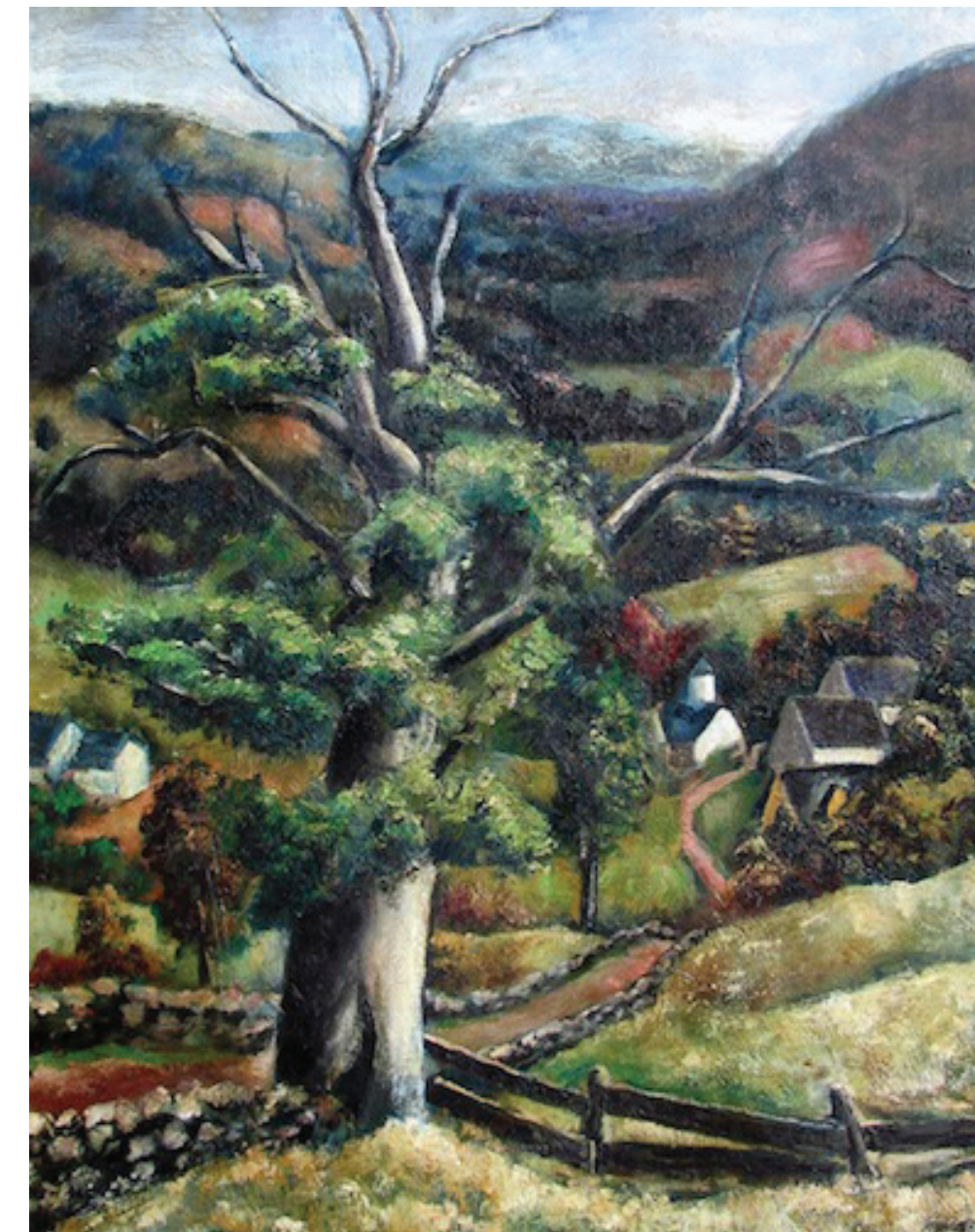


Anni von Baldaugh 1881-1953

Untitled

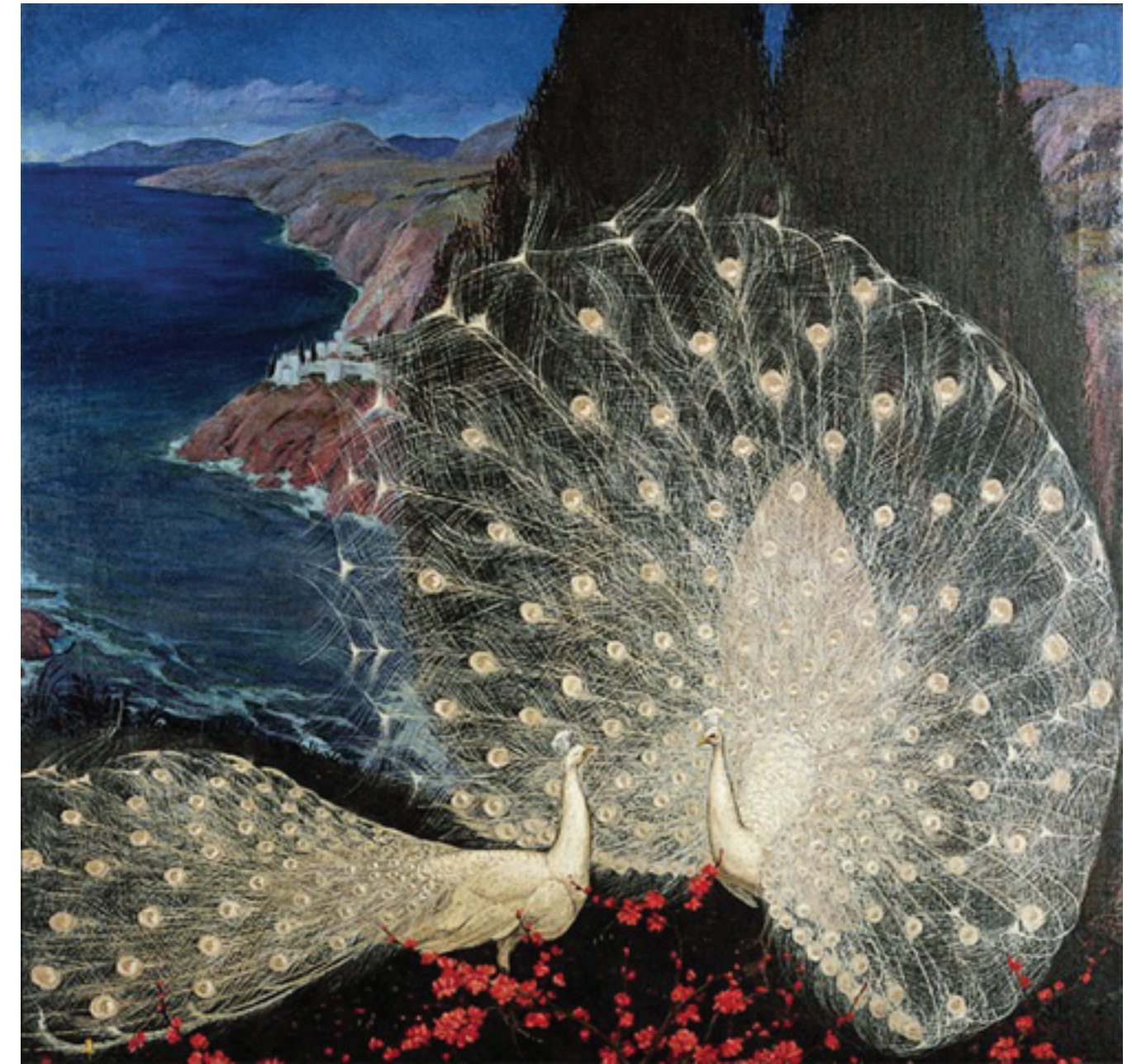
Oil on canvas, 24" x 30"

Arnold Blanch 1896-1968
From Lake Hill, Woodstock Area (1927)
 Oil on canvas 20" x 16"





Gregorio Prestopino 1907-1984
Peonies in Rural Landscape (c.1945)
 Gouache on paper, 20" x 14"



Jessie Arms Botke 1883-1971
The Challenge (1928)
 Oil on canvas, 52 1/2" x 54"



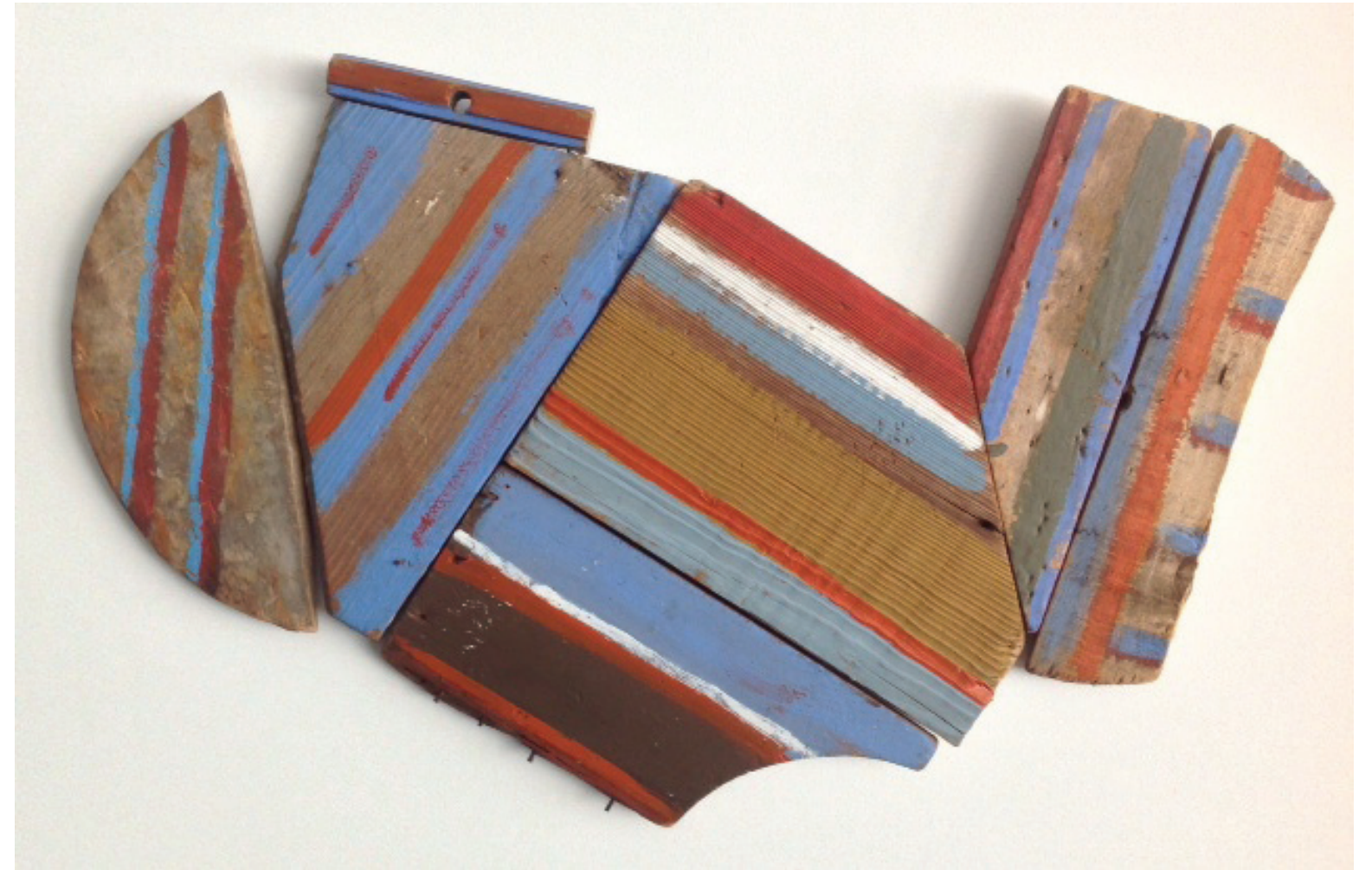
Martha Cahoon 1905-1999
Sleeping Mermaid and Tiger
 Oil on board, 17" x 22"



Ralph Cahoon 1910-1982
Women with Spyglasses Looking to Sea
 Oil on board, 18" x 25"



Eleanor Parke Custis 1896-1983
At the Dry Dock, Gloucester, MA (1924)
 Gouache on paper, 12" x 14 1/4"



Betty Parsons 1900-1982
It Was That Way (1971)
 Oil on wood panel, 20" x 29"



Levi Wells Prentice 1851-1935

Basket of Peaches (c.1890)

Oil on canvas, 12" x 18"



John Costigan 1888-1972

The Bathers (c.1960)

Oil on canvas, 9" x 12"



Virginia Banks 1920-1985
Basket of Line and Bait (1949)
 Oil on canvas, 22" x 28"



John Whorf 1903-1959
Landing Marlin (c.1957)
 Watercolor on paper, 21" x 30 1/2"



John Costigan 1888-1972
Mother and Children (1953)
 Watercolor on paper, 22" x 28"

Nathaniel Kaz 1917-2010
Chaos (1942)
 Bronze, 7" x 6 1/2" x 11"





John Costigan 1888-1972
Flower Arrangement (1966)
 Watercolor on paper, 28" x 22"



Pauline Palmer 1867-1938
The Clipper, Provincetown (c.1930)
 Oil on canvas board, 20" x 24"



Irene Rice Pereira 1902-1971

Pier (c.1934-35)

Oil on canvas, 24" x 30"



Irene Rice Pereira 1902-1971

Masts (c.1934-35)

Oil on canvas, 28" x 34"



Wilson Irvine 1869-1936

The Harbor at Camden, Maine (c.1907-11)

Oil on canvas, 24" x 27"



Wilson Irvine 1869-1936

Monhegan Picnic (c.1920)

Oil on canvas, 24" x 27 1/4"



Dorothy Dehner 1901-1994
Bolton Landing (1976)
 Bronze, 4 1/2" x 6" x 3 1/4"

James C. Myford 1940-2014
Ode to the Ancient Monarch (1978)
 Aluminum on black slate base
 28 1/2" x 9" x 6"





Vaclav Vytlacil 1892-1984
Still Life II (1946)
 Tempera on paper, 9" x 11 1/2"

Hyde Solomon 1911-1982
Southern Landscape IV (1954)
 Oil on canvas, 42" x 32"
 Sold





Vaclav Vytlacil 1892-1984
Martha's Vineyard (1947)
 Casein tempera on paper, 20" x 24"



John Von Wicht 1888-1970
Untitled
 Watercolor on paper, 25" x 34"



Nancy Kupferman b.1943

Still Life

Oil on canvas, 50" x 31"



Sally Michel 1902-2003

Chess Game (1978)

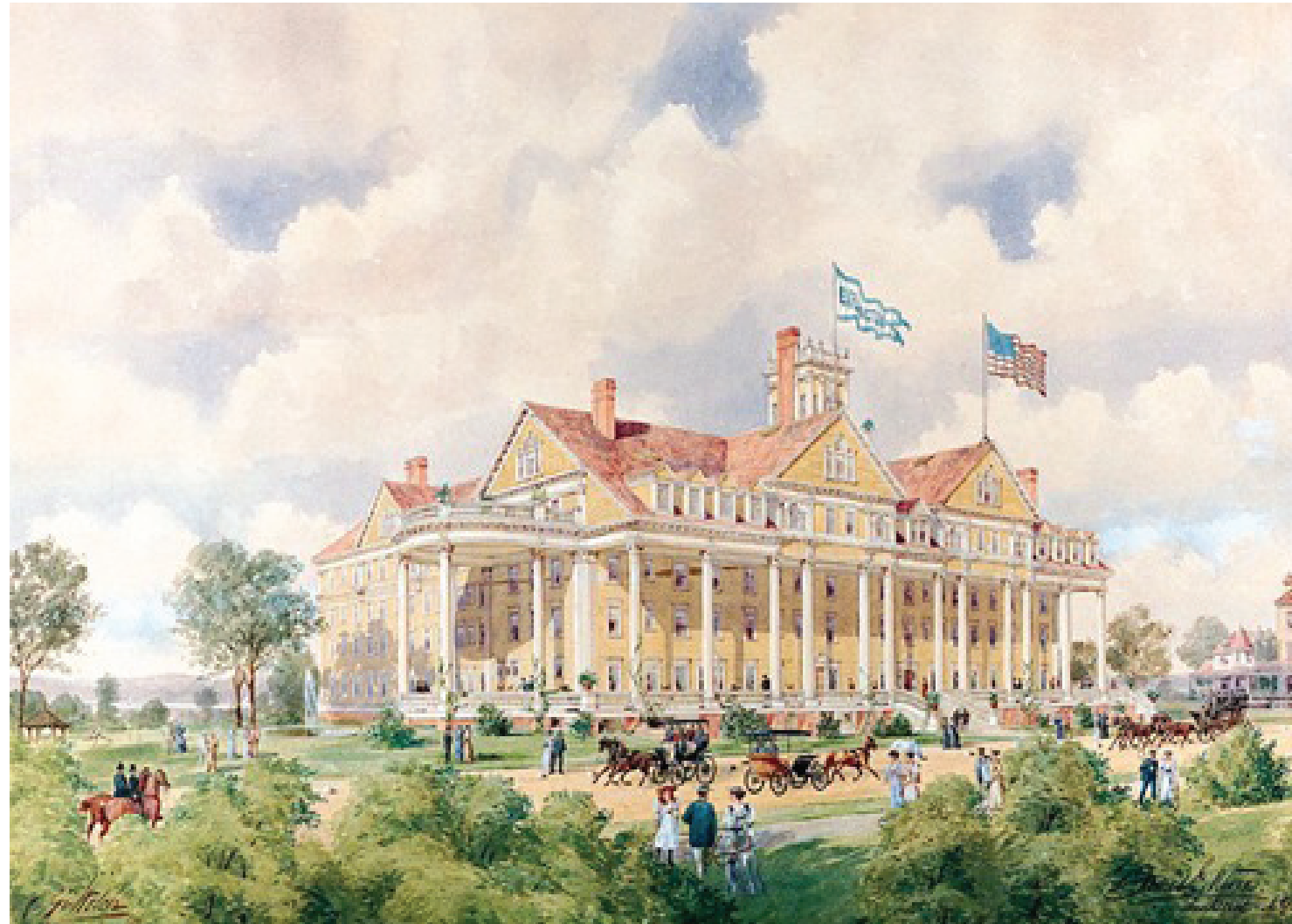
Oil on canvas, 42" x 50"



Carl Holty 1900-1973
Untitled (c.1947)
 Oil on canvas, 20" x 24"



Carl Holty 1900-1973
Female Bather by the Sea (1935)
 Oil on masonite, 11" x 14"



George Welch

The Hotel Earlington (1894)

Watercolor and pencil on paper, 22" x 33"



Edward Lamson Henry 1841-1919

Delaware & Hudson Canal, Ellenville NY (1900)

Watercolor on paper, 8 1/4" x 11"



Paul Sample 1896-1974
Busy Harbor Near San Pedro (1926)
 Oil on canvas, 26" x 32"



John Von Wicht 1888-1970
Millpond (1965)
 Gouache and watercolor on paper, 25" x 37"



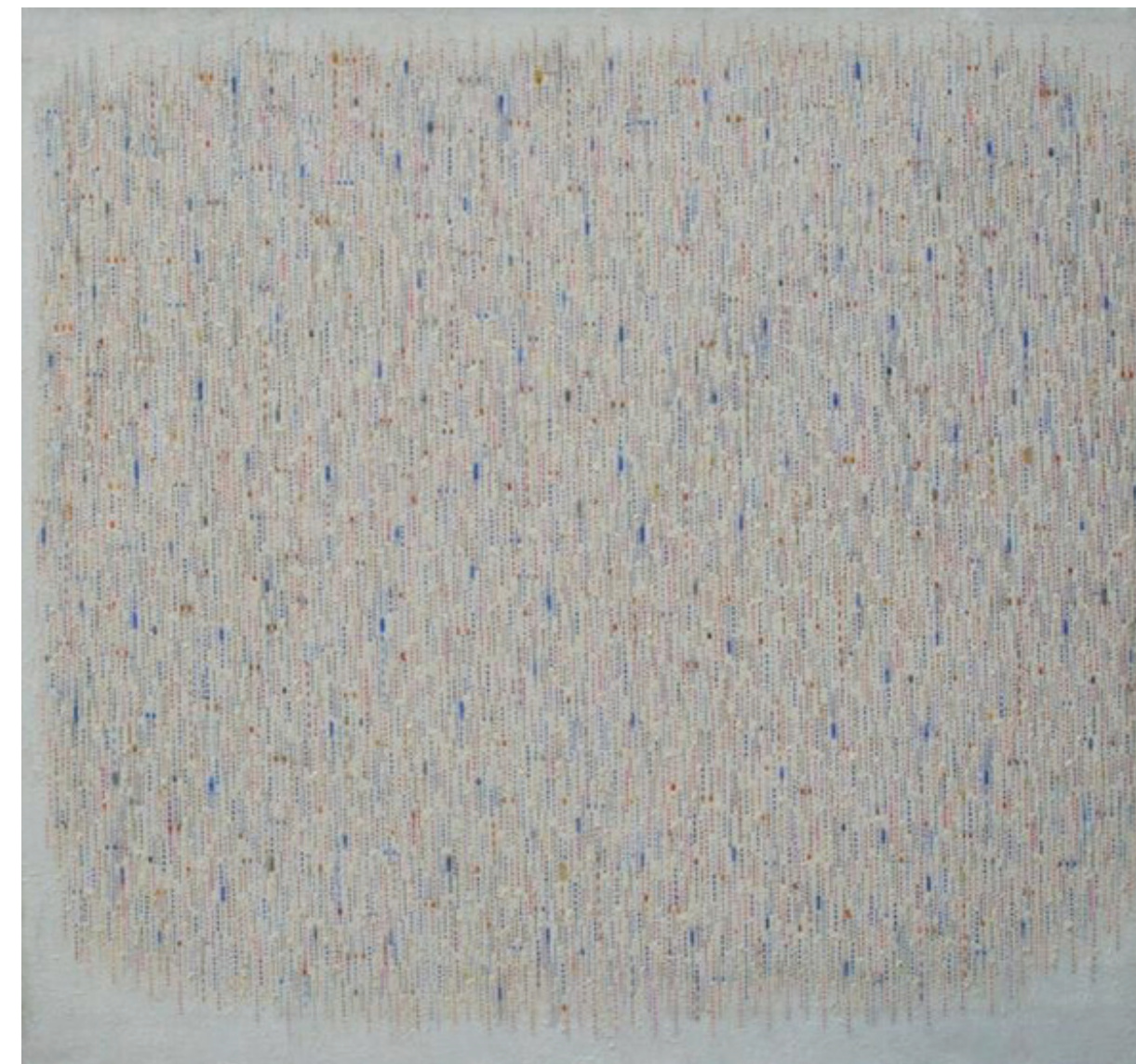
Malvina Hoffman 1885-1966
Mongolian Dancer
Bronze, 20 1/4" x 15" x 6"



Harry Bertoia 1915-1978
Bush Form (1961)
Beryllium copper
9 1/2" x 11" x 11"



Irving Wiles 1861-1948
Sailboats on Peconic Bay, Long Island
Oil on wood panel, 14" x 10"



Elaine Wesley 1923-2007
#25 Untitled (1980)
Oil on canvas, 36" x 40"



Edward Christiana 1912-1992
Break of Day, Lobsterman (1952-65)
 Oil and egg tempera on panel
 24" x 20"



Philip Reisman 1904-1992
Sheltered Harbor (c.1949-51)
 Oil on masonite, 18" x 22"



George E. Johanson b.1928
Teatime for Nudes (1966)
 Oil on canvas, 80" x 65"

Max Kalish 1891-1945
After the Bath (1934)
 Bronze, 9" x 3 1/2" x 2 1/2"





CALDWELL GALLERY HUDSON

T 518-828-7087 WWW.CALDWELLGALLERYHUDSON.COM