

The Caldwell Gallery
40 Years / 40 Works

1973-2013

Frederic Remington
1890

1973-2013

In 1973, when I founded The Caldwell Gallery, little did I imagine my passion for art and antiques would span a forty year career. To have my avocation become my vocation has been a delight. It has allowed me to work alongside my wife, Marcy, as well as with two of our children – Jay and Cynthia. Every day is a pleasure and an opportunity to learn, as we are surrounded by art which both energizes and inspires us. We never know what the next phone call or email may bring into our lives.

It has been a privilege to share our enthusiasm for art with collectors both beginning and seasoned. We have also had the good fortune to place many exceptional artworks in museum collections throughout the country. The collaborative nature of our client relationships is one of the most satisfying aspects of our work.

To celebrate this forty year milestone, we would like to share with you forty memorable works our gallery has handled. We hope you will enjoy them as much as we have. We look forward to continuing our journey with both old friends and new.

–Joe Caldwell
The Caldwell Gallery

*Unless otherwise noted all works are in private collections.



Charles Courtney Curran (1861-1942)
Bear Cliff Rocks (1930)
 Oil on canvas, 30" x 40"



Winslow Homer (1836-1910)
Diamond Shoal (1905)
 Watercolor on paper, 14" x 22"



Charles Marion Russell (1864-1926)
Incident Near Square Butte (1897)
 Oil on canvas, 20" x 28 1/2"
 Stark Museum



Frederic Remington (1861-1909)
The Stranger (1908)
 Oil on canvas, 27" x 40"



Sanford Robinson Gifford (1823-1880)

The Bay Road at Hudson, NY (1864)

Oil on canvas, 8 1/2" x 17"



Jasper Cropsey (1823-1900)

Hudson River from Hastings (1891)

Oil on canvas, 6" x 8"



LEFT

William Merritt Chase (1849-1916)

Sunset at Shinnecock Hills (1895)

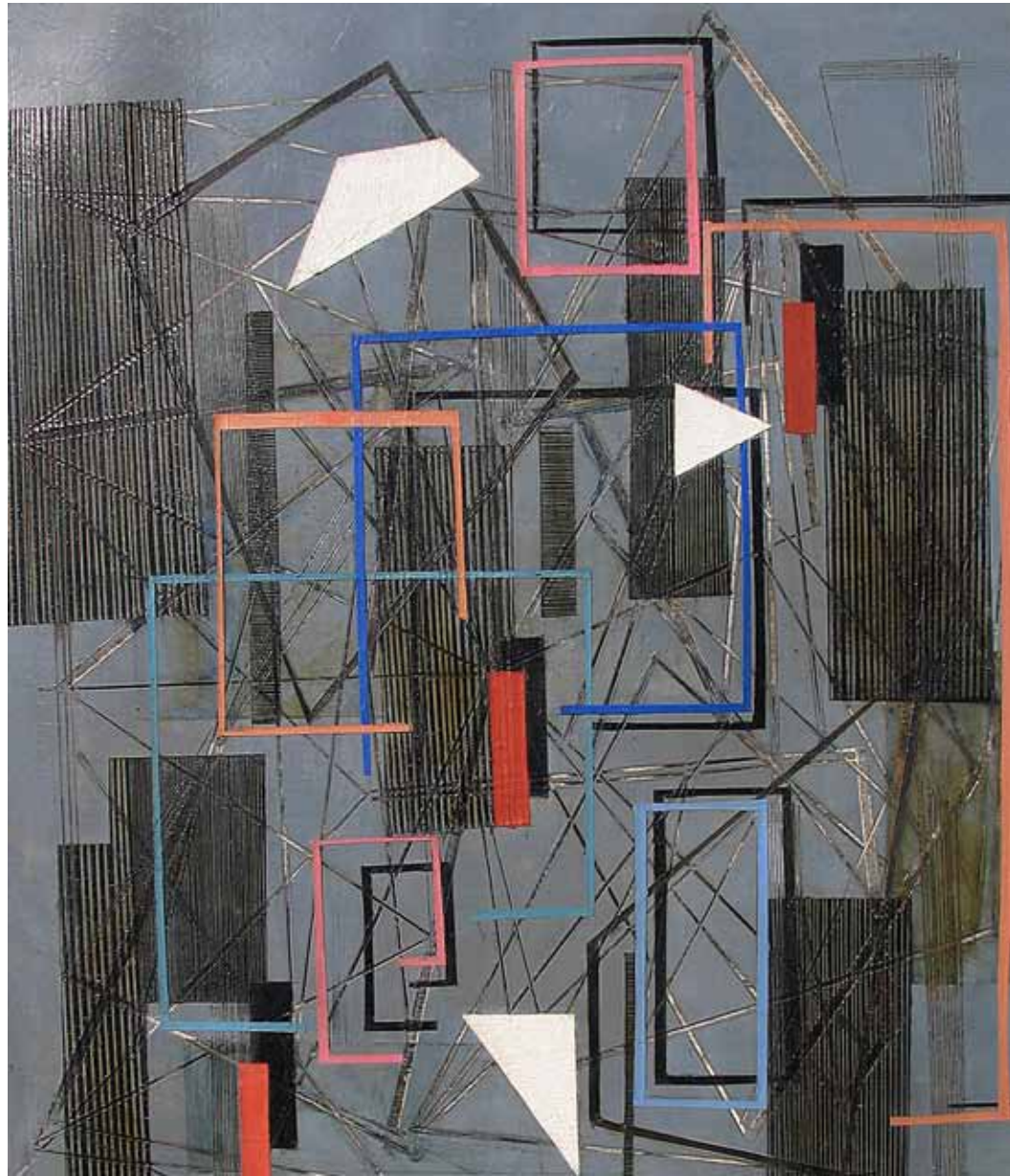
Oil on canvas, 33" x 40"

James Carroll Beckwith (1852-1917)

Bertha with Hat (1895)

Oil on wood panel, 14" x 10"





Irene Rice Pereira (1902-1971)

Two Triangles

Oil on canvas, 36" x 30"

Philadelphia Museum of Art



Agnes Pelton (1881-1961)

Prelude

Oil on canvas, 30" x 36"

Museum of Fine Arts Boston



Walter Launt Palmer (1854-1932)
Winter Idyll
 Oil on canvas, 30" x 40"



Maurice Prendergast (1858-1924)
Annisquam, MA
 Watercolor on paper, 12" x 18"



Frederik Marianus Kruseman (1817-1882)

Winter Scene (1862)

Oil on canvas, 28" x 39 1/2"



William Sidney Mount (1807-1868)

Laying Off (1862)

Oil on composition board, 8" x 10"



William A. Bouguereau (1825-1905)

The Fishing Girl (1868)

Oil on canvas, 28" x 21"

RIGHT

Thomas Moran (1837-1926)

A Passing Storm (1920)

Oil on canvas, 22" x 36"

Desert Caballeros Museum





James Hope (1818-1892)
Crystal Creek (1866)
 Oil on canvas, 34" x 38"
 Everson Museum of Art



Benjamin West (1738-1820)
The Death of General Wolfe
 Oil on panel, 17" x 24"



LEFT

Robert Blum (1857-1903)

Bead Stringers, Venice (1881)

Watercolor on paper, 15" x 21"

Cornelis Springer (1817-1891)

Village Scene

Oil on canvas, 39 1/2" x 28"

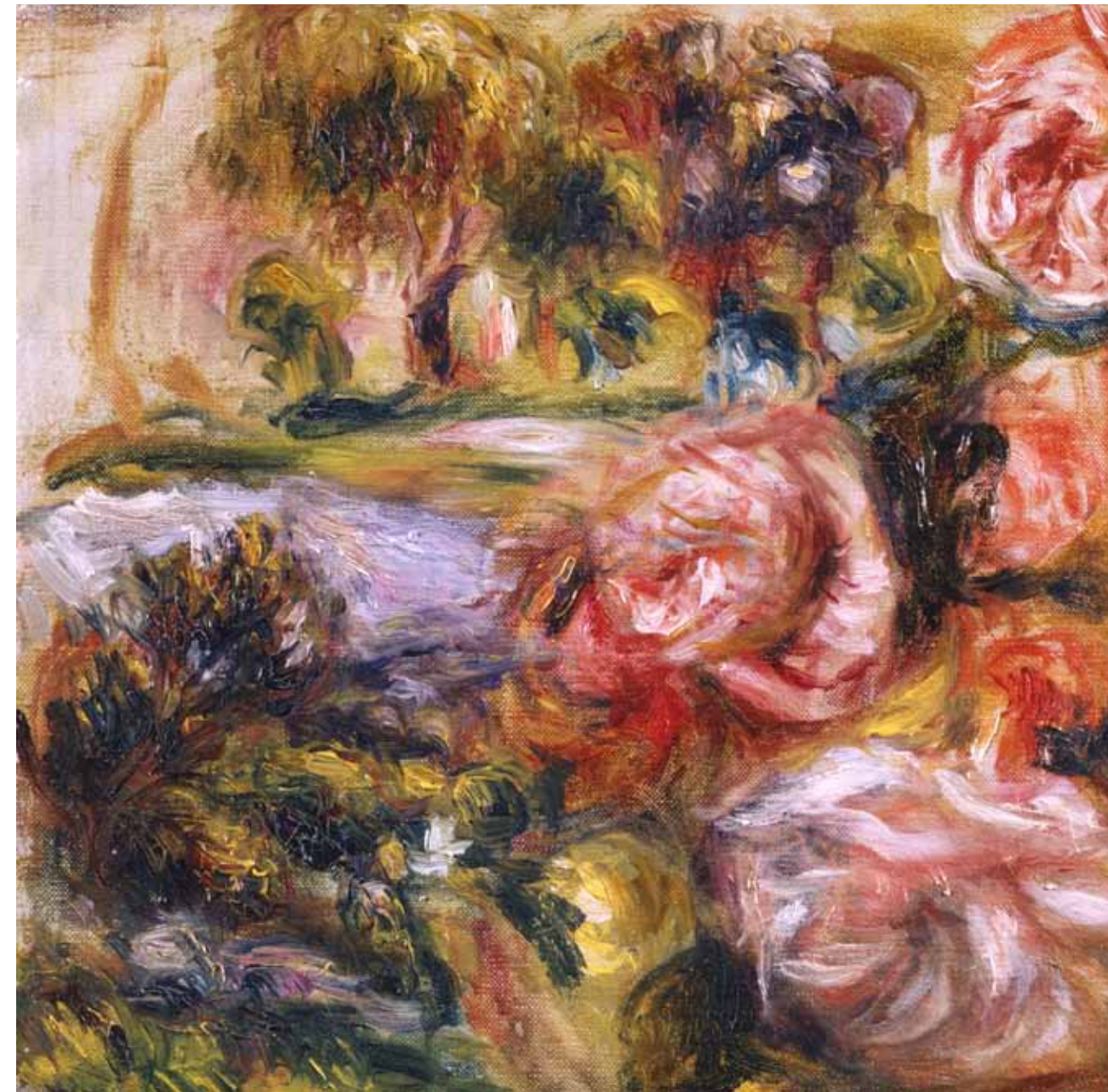




Henri Fantin-Latour (1836-1904)

Bouquet of Flowers (1882)

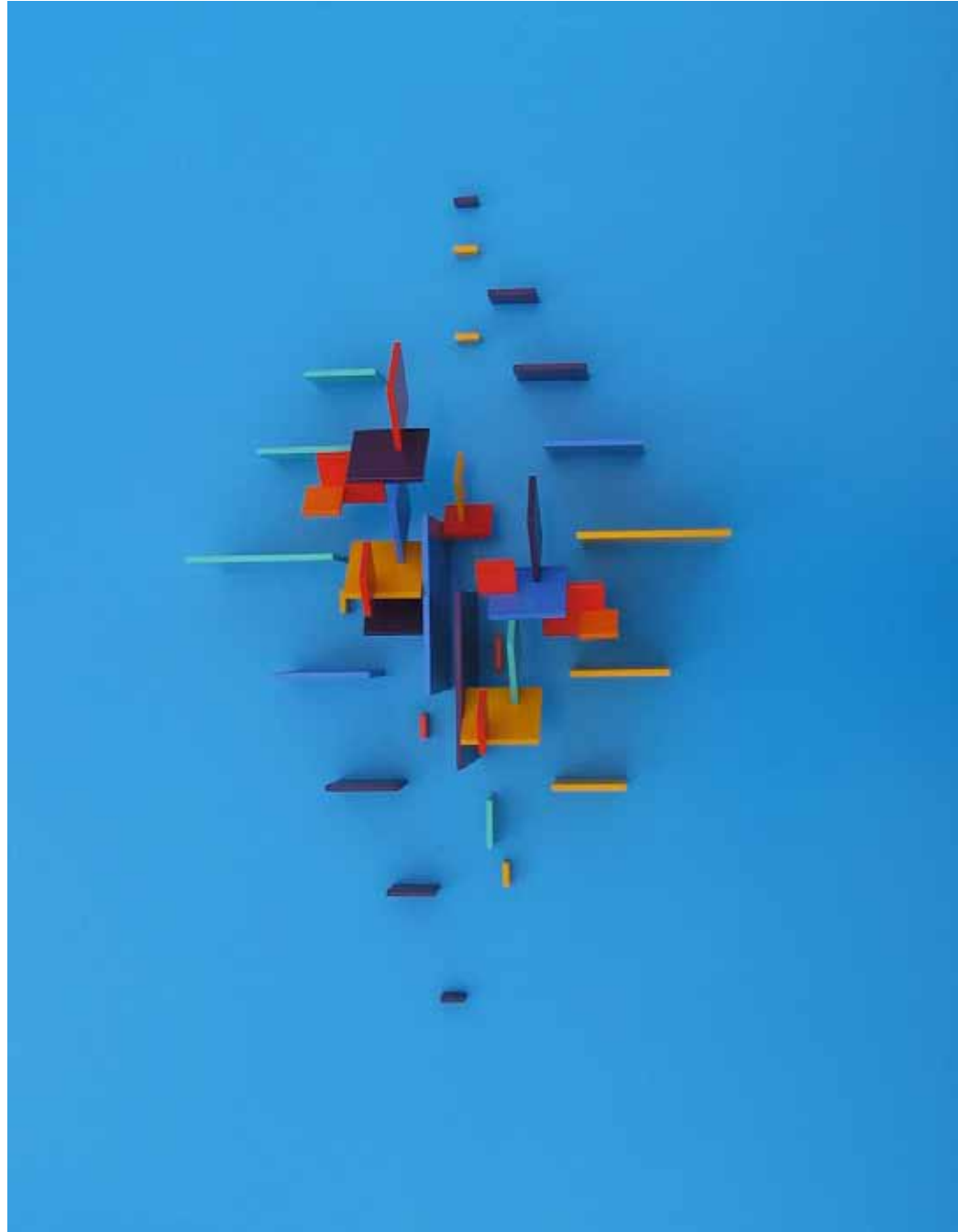
Oil on canvas, 16 1/2" x 24 1/4"



Pierre August Renoir (1841-1919)

Etude de Roses (1911)

Oil on canvas, 9" x 9 1/2"



Charles Biederman (1906-2004)

#17 (1977-1978)

Oil on aluminum relief, 41" x 32" x 8"

Hunter Museum of American Art

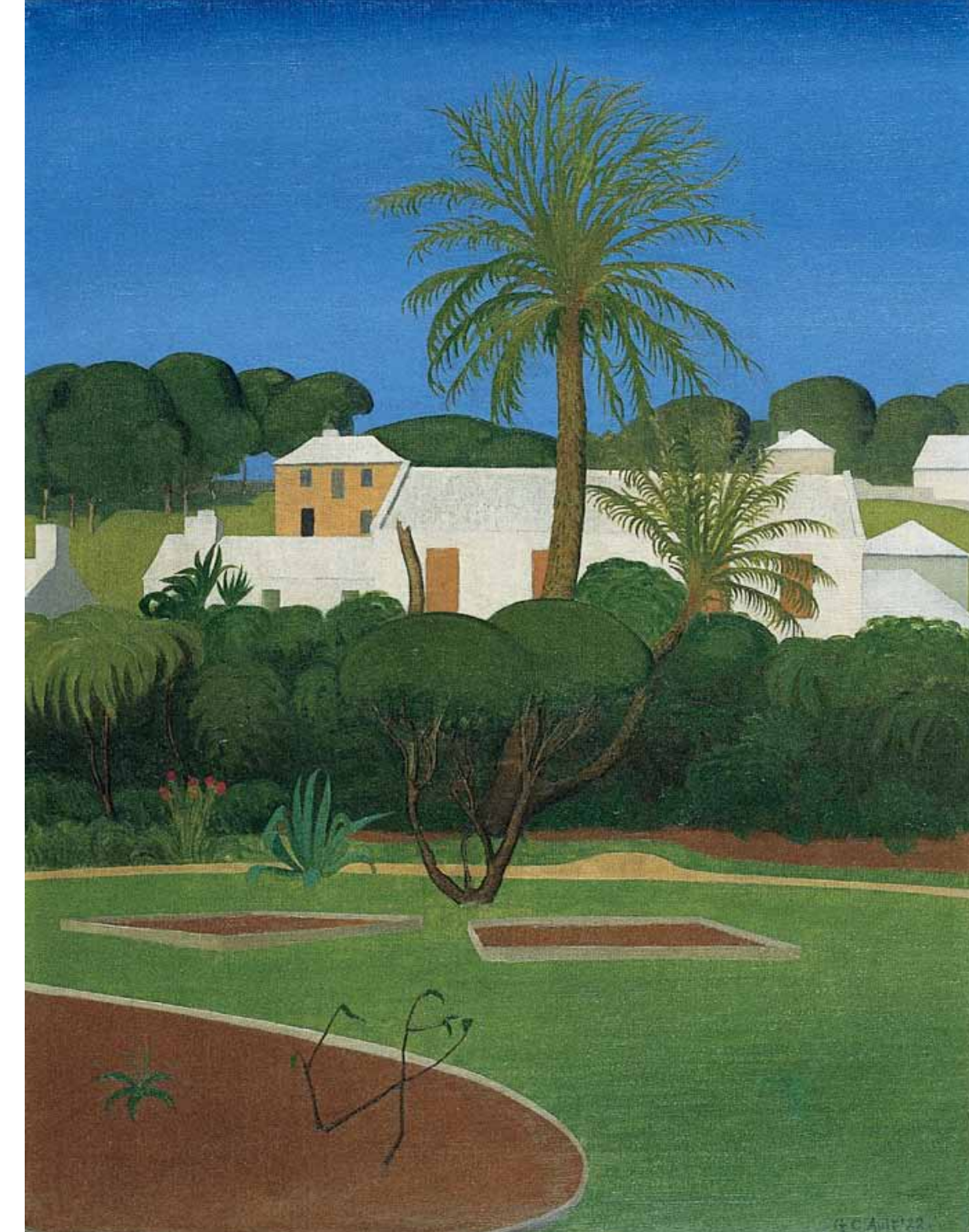
RIGHT

George Ault (1891-1948)

Bermuda Park (1922)

Oil on canvas, 22" x 16"

Masterworks Museum of Bermuda Art





Hamilton Hamilton (1847-1928)

Picking Flowers (1882)

Oil on canvas, 24" x 36"



Jane Peterson (1864-1926)

On the Pier, Edgartown

Oil on canvas, 29" x 36"



LEFT

Daniel Garber (1880-1958)
Friends Meeting House (1917)
 Oil on canvas, 24 1/4" x 30"

John Folinsbee (1916-1981)
February (1917)
 Oil on canvas, 32" x 33"





William Wallace Gilchrist (1879-1926)
Sewing a Party Dress (1895)
 Oil on canvas, 28" x 36"



Pauline Palmer (1867-1938)
Girl in Kimono
 Oil on canvas, 30" x 36"



LEFT

Oliver Ingraham Lay (1845-1890)

The Two Friends (1877)

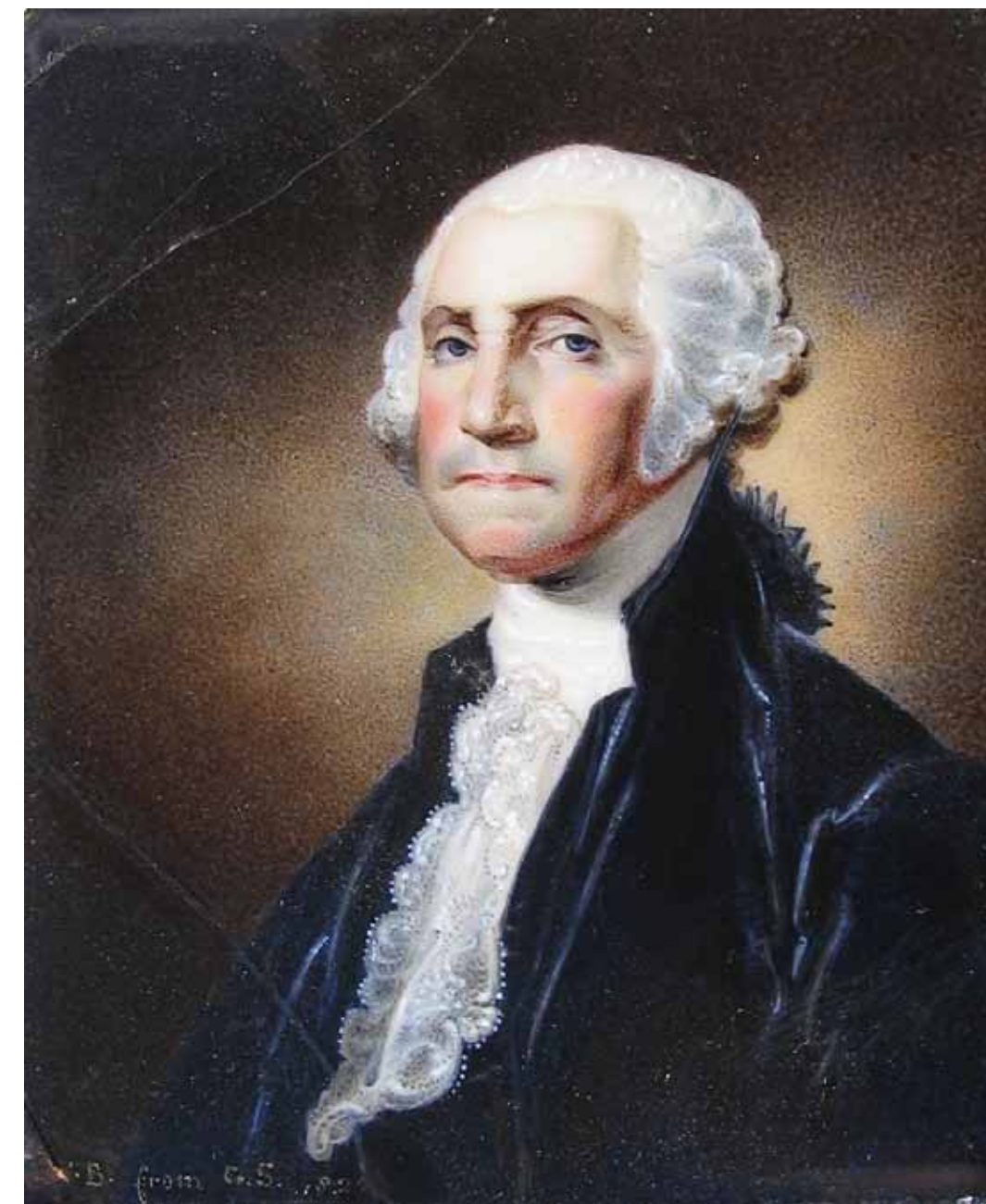
Oil on canvas, 24" x 32"

Everson Museum of Art

William Birch (1755-1834)

George Washington (1822)

Enamel on copper, 3" x 2 1/2"





LEFT

Maurice Utrillo (1883-1955)

Eglise de Villeneuve (1912)

Oil on canvas, 21 1/2" x 25"

Maurice Vlaminck (1876-1958)

Still Life of Flowers

Oil on canvas, 26" x 20"





Thomas Hart Benton (1889-1975)
Mending the Fence (1946)
 Watercolor on paper, 20" x 30"



Paul Sample (1896-1974)
Noon at the Fair (1940)
 Oil on canvas, 30" x 40"



Henry Koerner (1915-1991)
Tunnel of Love (1947)
 Oil on masonite, 36" x 30"
 Yale University Art Gallery

RIGHT

Charles Burchfield (1893-1967)
March Wind in the Woods
 Watercolor on paper, 39" x 53"





Ralston Crawford (1906-1978)
Cologne Landscape (1952)
 Oil on canvas, 20" x 30"

Henry Moore (1898-1986)
Head (1955)
 Bronze sculpture, Cast No. 5/6
 18" x 40"





The Caldwell Gallery

P.O. Box 310

Manlius, New York 13104

315-682-6073 800-331-1278

info@caldwellgallery.com

www.caldwellgallery.com